

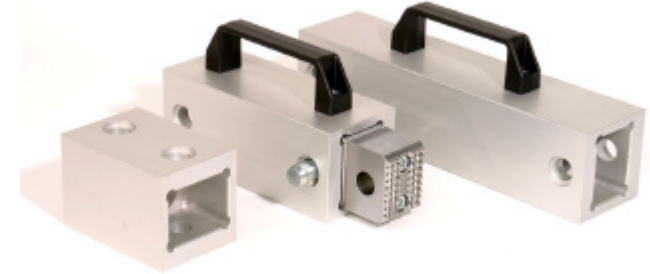
# Telescopic Ram Accessories

## Telescopic Ram Accessories

Telescopic Ram Accessories



**Ram Support**  
Dimensions: 40 x 19 x 25,5 cm  
Weight: 9 kg



**Extension:**  
Large: 32,5 x 8 x 8 cm 3,7 kg  
medium: 19,5 x 8 x 8 cm 2,2 kg  
Small: 11,5 x 8 x 8 cm 1 kg  
Jaw: 9,5 x 6 x 4,5 cm 1,6 kg  
Pin with Ballspring



**Accessory Set Fixed:**  
V-Head: 12 x 7,5 x 7,5 cm Weight: 2 kg  
Pointed Head: 16,5 x 4,5 x 7,5 cm Weight: 2,2 kg  
Extended Base Fixed: 11 x 11 x 11 cm Weight: 2,7 kg  
2 x Pin with Ballspring



**Accessory Set Swivel:**  
V-Head: 12 x 7,5 x 7,5 cm Weight: 2 kg  
Pointed Head: 16,5 x 4,5 x 7,5 cm Weight: 2,2 kg  
Extended Base Swivel: 11 x 11 x 12 cm Weight: 2,7 kg  
2 x Pin with Ballspring